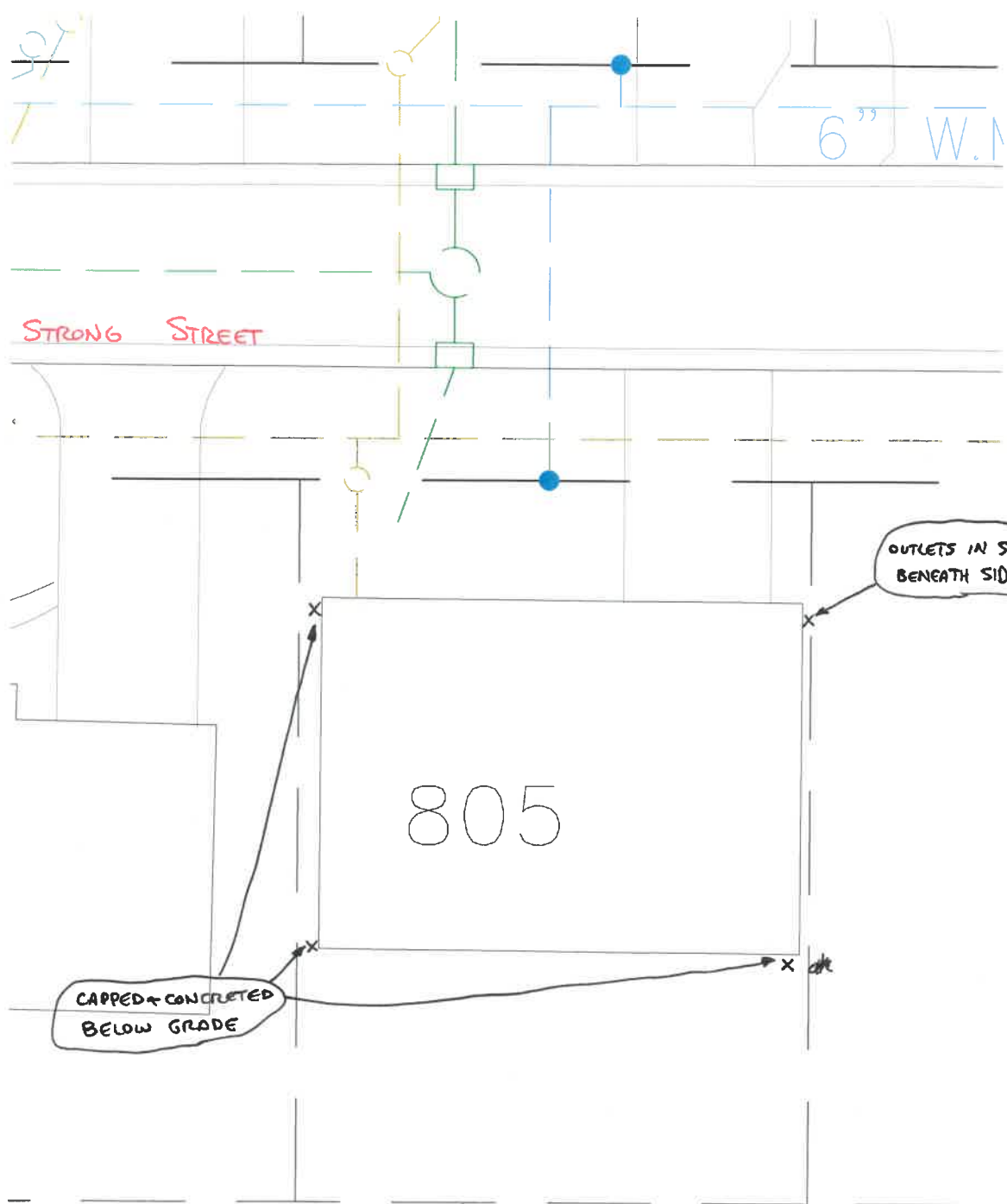


805 STRONG STREET
ILLEGAL DOWNSPOUT INVESTIGATION

2016
N
1" = 20'



ALL ILLEGAL CONNECTIONS HAVE BEEN
CAPPED OR PLUGGED AND ARE IN
COMPLIANCE AT THIS TIME.

INSPECTED BY: MARK SPIESS

